

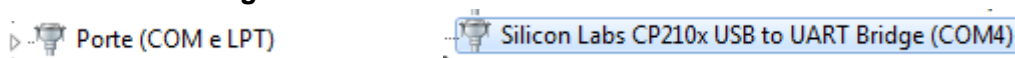
INSTALLAZIONE SOFTWARE

1. **Inserire la chiavetta argentata e lanciare il Setup**
2. **Seguire i passaggi e completare successivamente l'installazione dei Driver**
3. **Collegare lo strumento ONDA con il cavo USB al PC ed inserire la chiavetta USB di decodifica del software.**

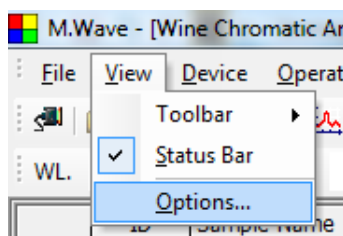
N.B. il software può essere usato solo in presenza della chiavetta USB inserita.

CONTROLLO DELLO STRUMENTO ONDA DA PC

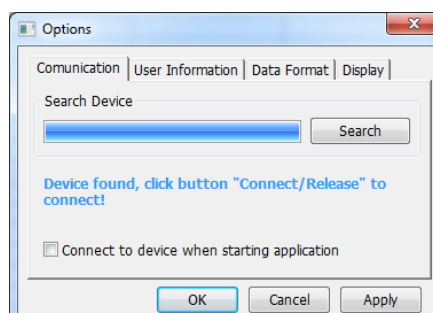
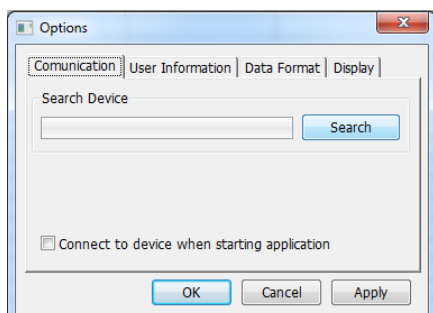
1. **Verificare in GESTIONE DISPOSITIVI del computer l'assegnazione della porta COM: se necessario assegnare tra COM1 e COM8**



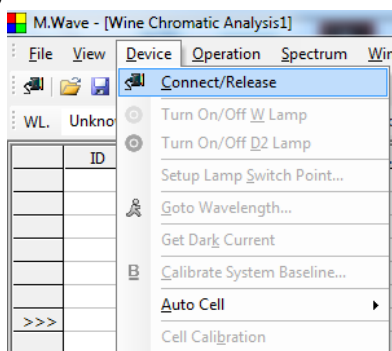
2. **Avviare il software M.Wave**
3. **Dal menu VIEW selezionare OPTIONS**



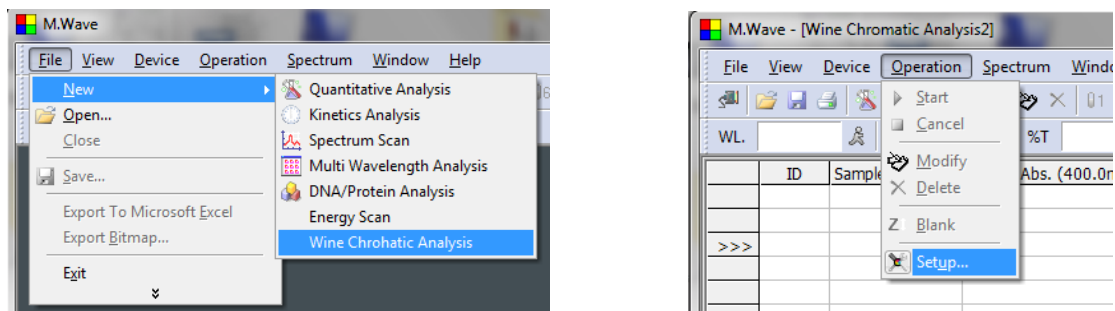
4. **Cliccare su SEARCH e attendere**



5. **Confermare e uscire con OK**
6. **Dal menu DEVICE selezionare CONNECT per connettere lo strumento: sul display compare "PC connecting"**

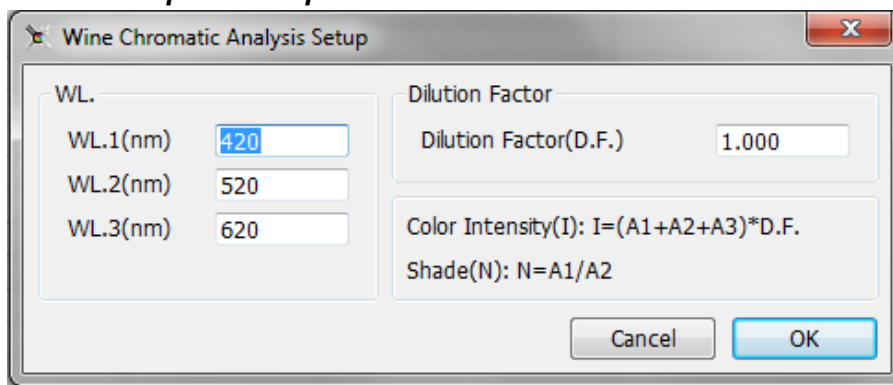


ANALISI INTENSITA' COLORANTE E TONALITA' (OIV-MA-AS2-07B)



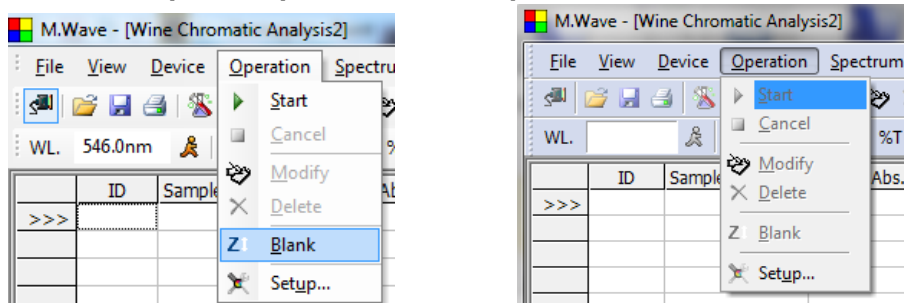
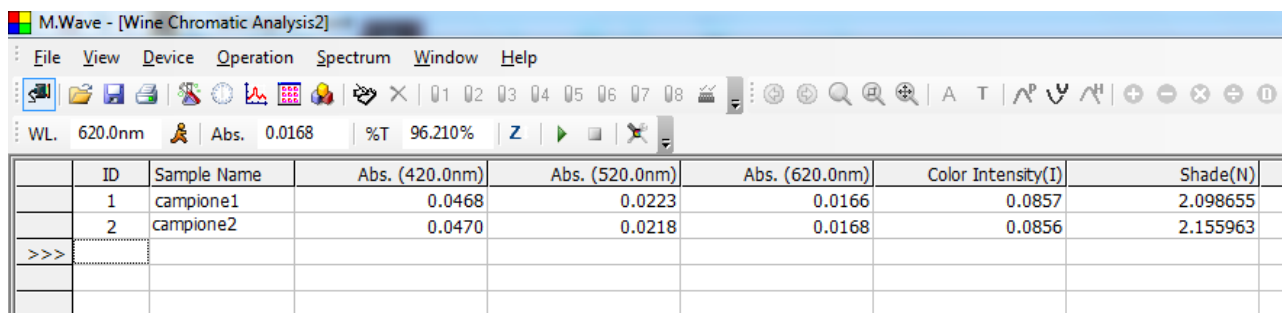
IMPOSTAZIONE PARAMETRI SETUP

- 1 Inserire le lunghezze d'onda WL1= 420 WL2= 520 WL3 620 nm
- 2 Il fattore di diluizione DF = 1.0 è impostato per Cuvetta da 10mm su campione tal quale



ANALISI DEI CAMPIONI

1. Riempire una cuvetta con acqua distillata, mettere nella posizione di lettura, chiudere il comparto campioni e premere BLANK per azzerare.
2. Posizionare il campione e premere START per iniziare la misura

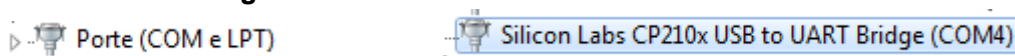
ID	Sample Name	Abs. (420.0nm)	Abs. (520.0nm)	Abs. (620.0nm)	Color Intensity(I)	Shade(N)
1	campione1	0.0468	0.0223	0.0166	0.0857	2.098655
2	campione2	0.0470	0.0218	0.0168	0.0856	2.155963

INSTALLAZIONE SOFTWARE

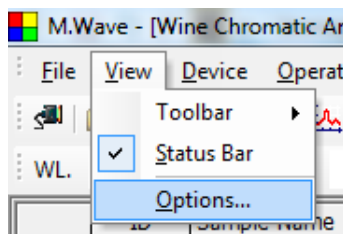
4. **Inserire il CD e lanciare il Setup**
5. **Seguire i passaggi e completare l'installazione dei Driver**
6. **Collegare lo strumento ONDA con il cavo USB al PC ed inserire la chiavetta USB di decodifica del software. N.B. il software può essere usato solo in presenza della chiavetta USB inserita.**

CONTROLLO DELLO STRUMENTO ONDA DA PC

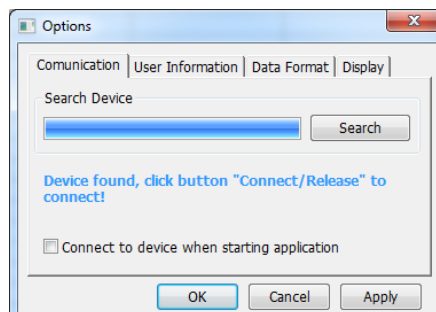
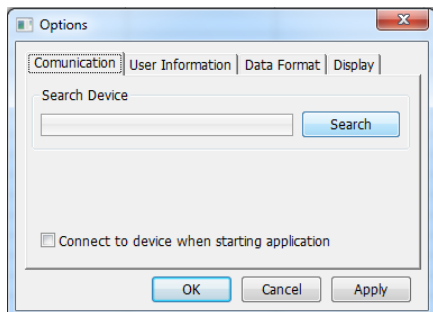
7. **Verificare in GESTIONE DISPOSITIVI del computer l'assegnazione della porta COM: se necessario assegnare tra COM1 e COM8**



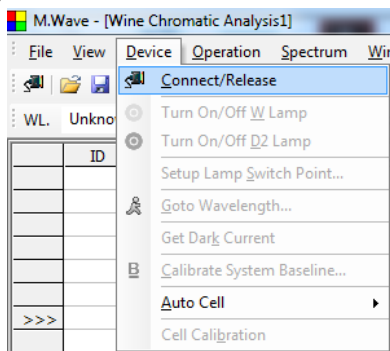
8. **Avviare il software M.Wave WINERY**
9. **Dal menu VIEW selezionare OPTIONS**



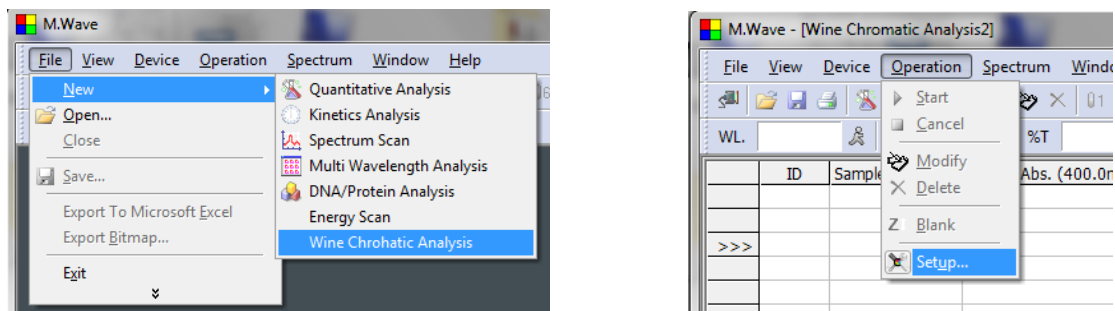
10. **Cliccare su SEARCH e attendere**



11. **Confermare e uscire con OK**
12. **Dal menu DEVICE selezionare CONNECT per connettere lo strumento: sul display compare "PC connecting"**

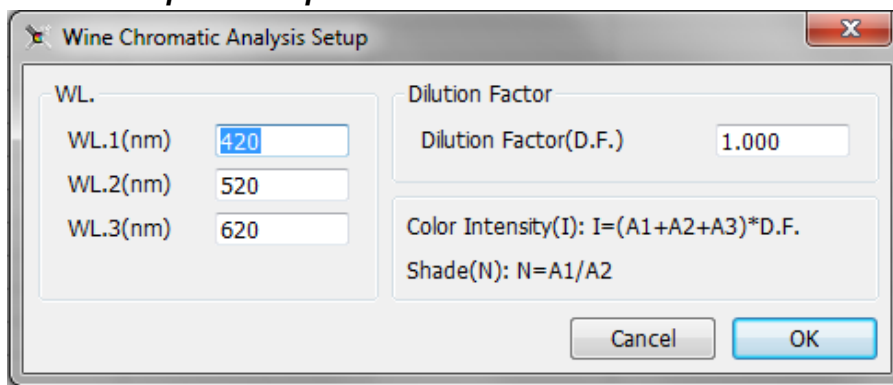


ANALISI INTENSITA' COLORANTE E TONALITA' (OIV-MA-AS2-07B)



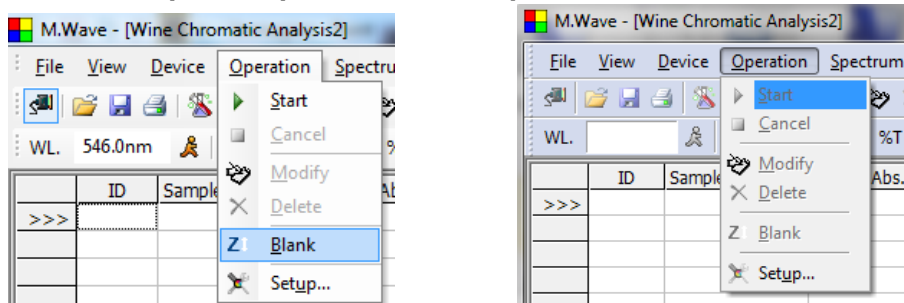
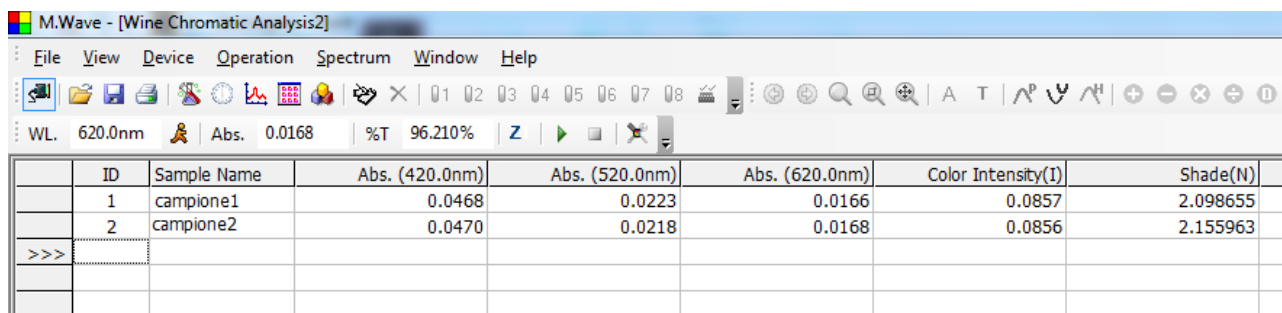
IMPOSTAZIONE PARAMETRI SETUP

- 1 Inserire le lunghezze d'onda WL1= 420 WL2= 520 WL3 620 nm
- 2 Il fattore di diluizione DF = 1.0 è impostato per Cuvetta da 10mm su campione tal quale



ANALISI DEI CAMPIONI

3. Riempire una cuvetta con acqua distillata, mettere nella posizione di lettura, chiudere il comparto campioni e premere BLANK per azzerare.
4. Posizionare il campione e premere START per iniziare la misura

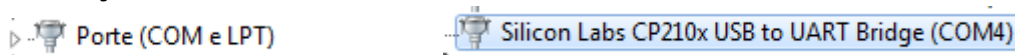
ID	Sample Name	Abs. (420.0nm)	Abs. (520.0nm)	Abs. (620.0nm)	Color Intensity(I)	Shade(N)
1	campione1	0.0468	0.0223	0.0166	0.0857	2.098655
2	campione2	0.0470	0.0218	0.0168	0.0856	2.155963

SOFTWARE INTALLATION

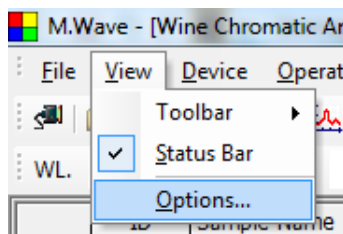
7. **Insert the silver USB stick and open Setup**
8. **Follow the steps and complete with the installation of the Driver**
9. **Connect the ONDA spectrophotometer with the USB cable and insert the USB DONGLE Key. ONDA WINE software can be used only with the Usb Dongle Key connected.**

REMOTE CONTROL BY PC

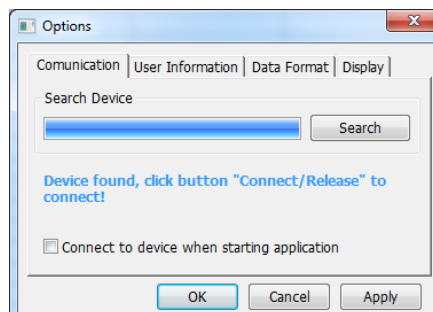
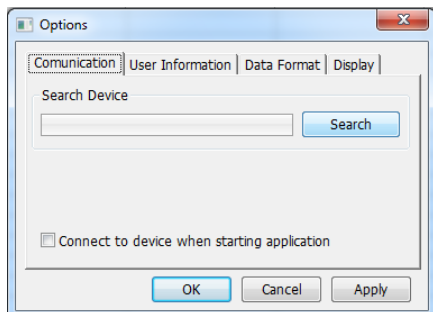
13. **Verify in Hardware Manager of the PC the COM PORT of the Driver SILICON-LAB: if necessary set between COM1 e COM8**



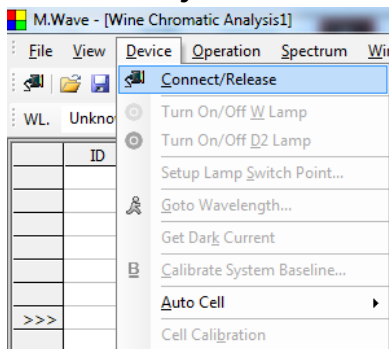
14. **Start the software M.Wave**
15. **menu VIEW select OPTIONS**



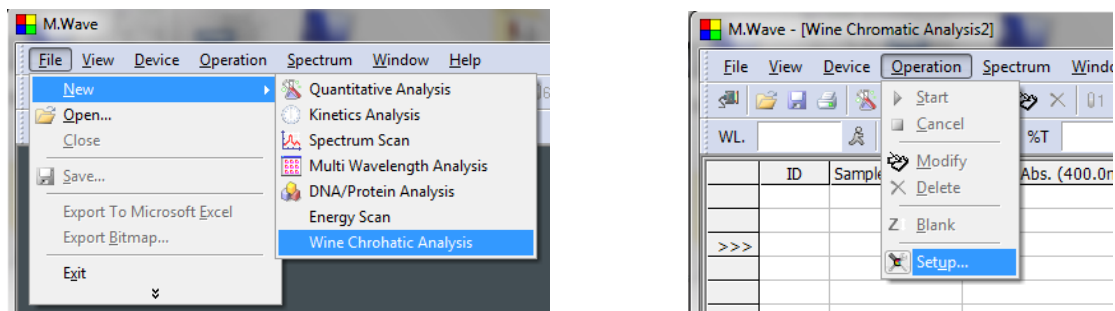
16. **click on SEARCH and wait**



17. **When completed, confirm with OK**
18. **menu DEVICE select CONNECT. Now you control the device from the PC**

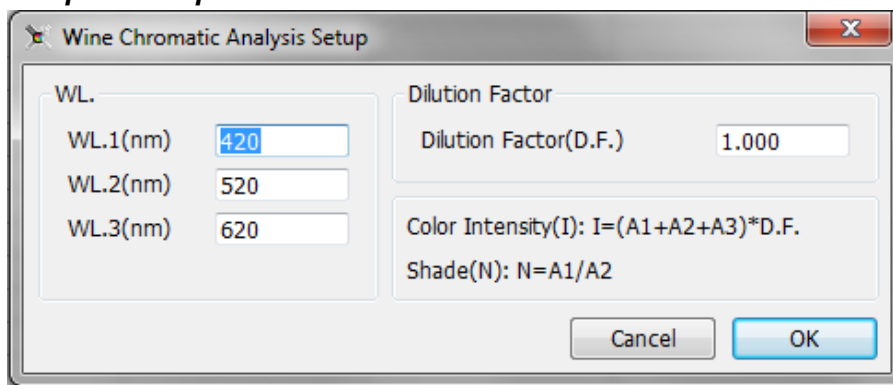


COLOUR INTENSITY AND SHADE (OIV-MA-AS2-07B)



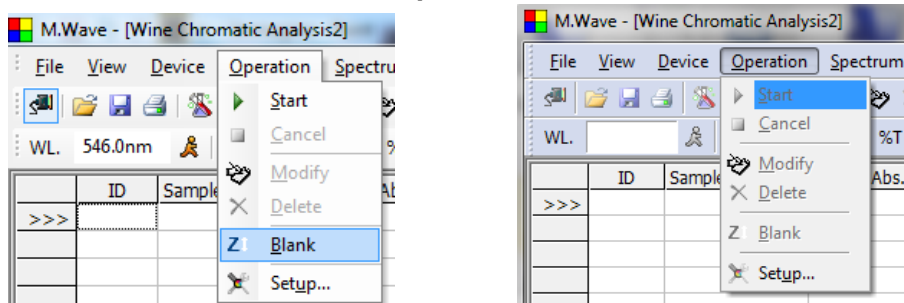
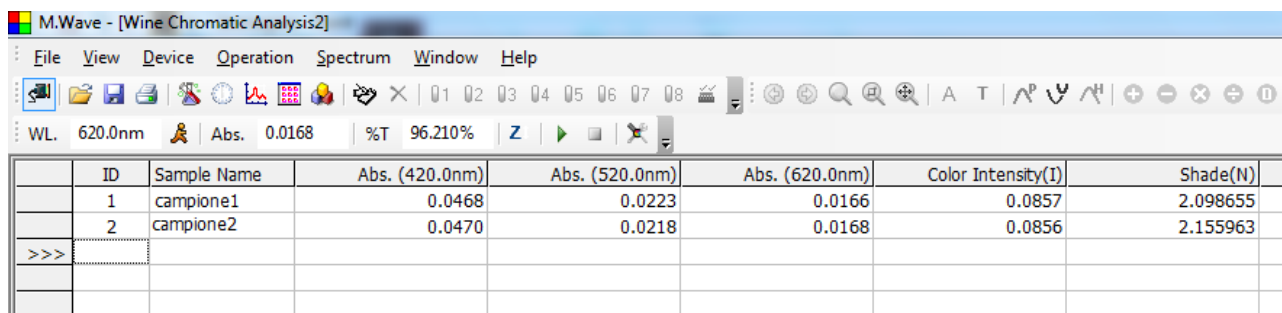
PARAMETERS SETUP

- 1 Insert the wavelength WL1= 420 WL2= 520 WL3 620 nm
- 2 Dilution Factor DF = 1.0 is set for 10mm cuvette for pure sample



ANALYSIS OF SAMPLES

5. **ZERO:** Fill a cuvette with distilled water, position in the holder, close the lead and click **BLANK**
6. **SAMPLE:** Fill a cuvette with the sample and click **START** to measure

ID	Sample Name	Abs. (420.0nm)	Abs. (520.0nm)	Abs. (620.0nm)	Color Intensity(I)	Shade(N)
1	campione1	0.0468	0.0223	0.0166	0.0857	2.098655
2	campione2	0.0470	0.0218	0.0168	0.0856	2.155963

SOFTWARE INTALLATION

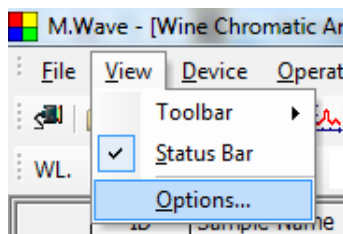
10. Insert the CD and open Setup
11. Follow the steps and complete with the installation of the Driver
12. Connect the ONDA spectrophotometer with the USB cable and insert the USB DONGLE Key. ONDA WINE software can be used only with the Usb Dongle Key connected.

REMOTE CONTROL BY PC

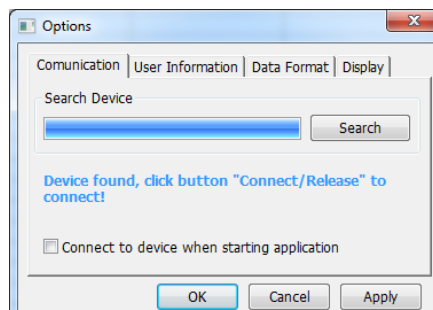
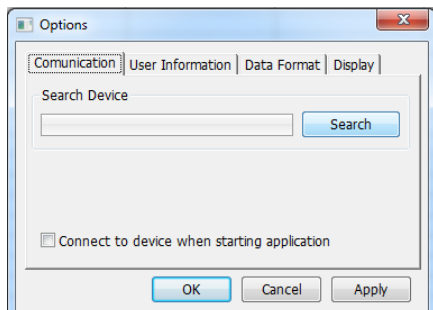
19. Verify in Hardware Manager of the PC the COM PORT of the Driver SILICON-LAB: if necessary set between COM1 e COM8



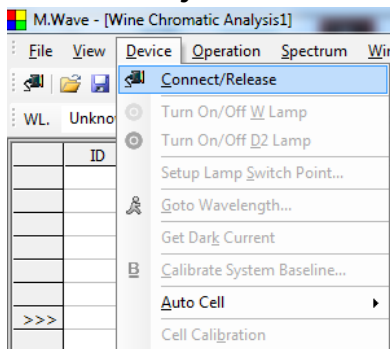
20. Start the software M.Wave WINERY
21. menu VIEW select OPTIONS



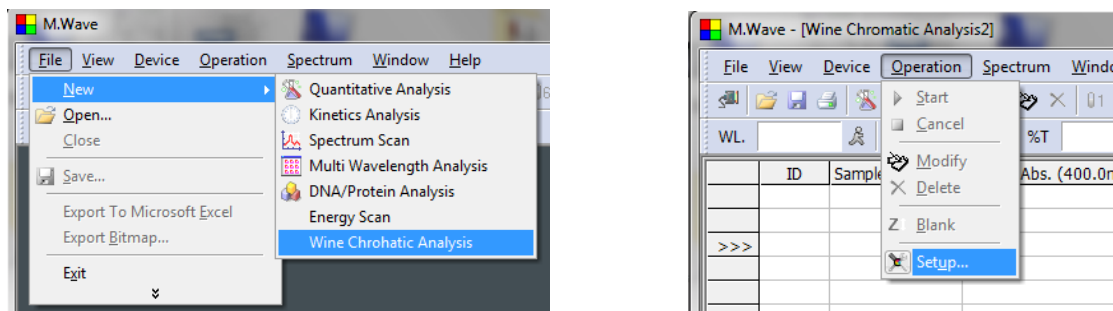
22. click on SEARCH and wait



23. When completed, confirm with OK
24. menu DEVICE select CONNECT. Now you control the device from the PC

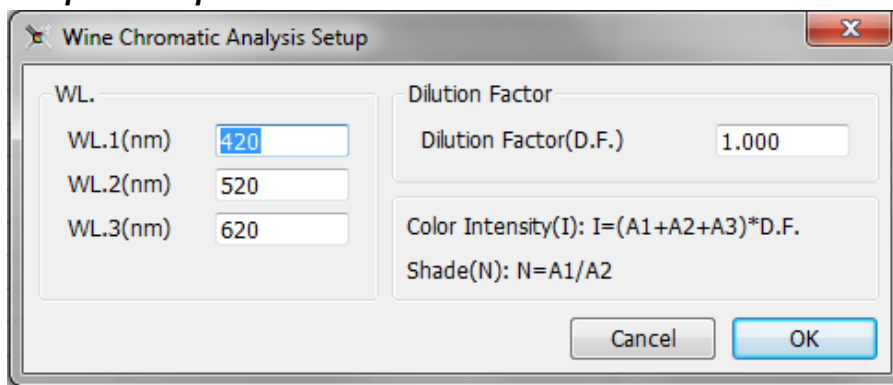


COLOUR INTENSITY AND SHADE (OIV-MA-AS2-07B)



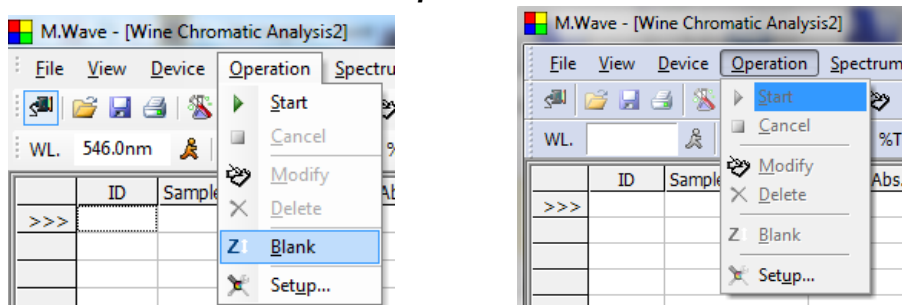
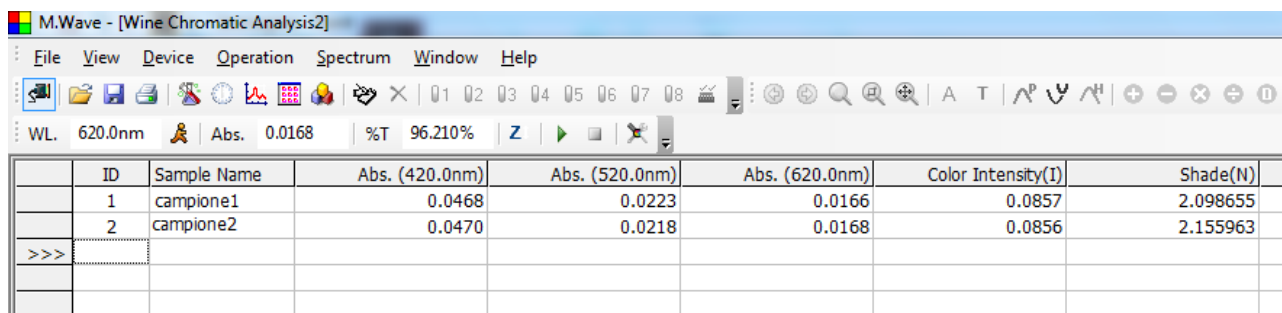
PARAMETERS SETUP

- 1 Insert the wavelength WL1= 420 WL2= 520 WL3 620 nm
- 2 Dilution Factor DF = 1.0 is set for 10mm cuvette for pure sample



ANALYSIS OF SAMPLES

7. **ZERO:** Fill a cuvette with distilled water, position in the holder, close the lead and click **BLANK**
8. **SAMPLE:** Fill a cuvette with the sample and click **START** to measure

ID	Sample Name	Abs. (420.0nm)	Abs. (520.0nm)	Abs. (620.0nm)	Color Intensity(I)	Shade(N)
1	campione1	0.0468	0.0223	0.0166	0.0857	2.098655
2	campione2	0.0470	0.0218	0.0168	0.0856	2.155963